

Your Premium White Label Partner

HVAC Control

comforto
by M2S

**Commercial
Thermostats**

Low Voltage - RTU - Fan Coil

prestigio
by M2S

**Residential
Thermostats**

Low Voltage

smartio
by M2S

**Human-Machine
Interface**

Low Voltage

espresso
by M2S

**Air
Controller**

Low Voltage - HRV - ERV

M2S
ELECTRONICS

About M2S



Made in North America

For more than 30 years, M2S Electronics is a major player in the HVAC industry.

Always on the lookout for emerging technologies, our know-how in electronics will keep you as a leading player in your market.

M2S Electronics provides added-value services from design to manufacturing and integration of your electronic products.

Being fully customizable design platforms, M2S thermostats allow endless possibilities for the end-customer in terms of design, functionality, and more!

comforto

by M2S

Commercial Thermostats

Low Voltage - RTU - Fan Coil

| | |
|-------------|---|
| TX120 | 4 |
| TX070 | 5 |
| TX080 | 6 |

prestigio

by M2S

Residential Thermostats

Low Voltage

| | |
|-------------|---|
| TX110 | 8 |
| TX075 | 9 |

smartio

by M2S

Human-Machine Interface

Low Voltage

| | |
|-------------|----|
| TX115 | 11 |
| TX125 | 12 |

espresso

by M2S

Air Controlers

Low Voltage - HRV - ERV

| | |
|-------------|----|
| TX050 | 14 |
| TX020 | 15 |
| TX030 | 16 |
| TX060 | 17 |

| | |
|----------------------------|-------|
| Specifications Table | 18-19 |
|----------------------------|-------|



comforto

by M2S

Commercial Thermostats

Low Voltage - RTU - Fan Coil

Solutions tailored
to your needs

- 7" Color Resistive Touchscreen
- BACnet MS/TP or IP over WiFi
- Modbus

Application & Compatibility

- Dual-stage Conventional Systems
- Dual-stage Heat Pump Systems
- Low Voltage Systems (24VAC)
- BMS Supervised Operation



Key Features

- Large 7 inch Diagonal Full Color Display (23.5 sq.in.)
- Resistive Touchscreen
- 5-2-days Programmable
- Fahrenheit or Celsius Temperature Unit
- Adjustable Temperature Differentials
- Permanent Memory
- Compressor Cycle Protection
- Manual or Automatic Changeover
- Temporary Override
- Integrated Temperature & Humidity Sensor
- BACnet MS/TP Wired Interface
- BACnet IP over WiFi
- Economizer Function (Opt.)
- Dehumidification Function (Opt.)
- Analog Output (2x Opt.)

- 4.3" Monochrome Resistive Touchscreen
- BACnet MS/TP or IP over WiFi
- Modbus

Application & Compatibility

- Dual-stage Conventional Systems
- Dual-stage Heat Pump Systems
- Low Voltage Systems (24VAC)
- BMS Supervised Operation



Key Features

- Large 4.3 inch Diagonal Monochrome Display (8.9 sq.in.) with White Backlight
- Resistive Touchscreen
- 5-2 days Programmable
- Fahrenheit or Celsius Temperature Unit
- Adjustable Temperature Differentials
- Permanent Memory
- Compressor Cycle Protection
- Manual or Automatic Changeover
- Temporary Override
- Integrated Temperature & Humidity Sensor
- Remote Temperature Sensing
- BACnet MS/TP Wired Interface
- BACnet IP over WiFi
- Economizer Function (Opt.)
- Dehumidification Function (Opt.)
- Analog Output (2x Opt.)

- 4.3" Monochrome Resistive Touchscreen
- Wireless Communication (WiFi)
- 2-Pipe or 4-Pipe Configuration

Application & Compatibility

- 3-speed Fan Coil Systems
- 2-pipe & 4-pipe Compatible
- Low Voltage Systems (24VAC)
- WiFi Capable



Key Features

- Large 4.3 inch Diagonal Monochrome Display (8.9 sq.in.) with White Backlight
- Resistive Touchscreen
- 5-2 days Programmable
- Fahrenheit or Celsius Temperature Unit
- Adjustable Temperature Differentials
- Permanent Memory
- Auxiliary Heat Output
- Manual or Automatic Changeover
- 2-pipe (5 Modes) 4-pipe (1 Mode)
- Integrated Temperature & Humidity Sensor
- Water Temperature Sensing
- Seasonal Changeover

prestigio

by M2S

Residential Thermostats

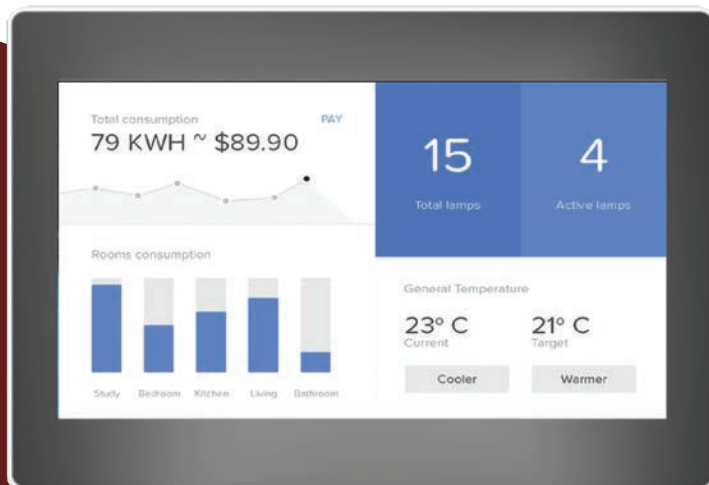
Low Voltage

Solutions tailored
to your needs

- 7" Color Front Glass Capacitive Touchscreen
- Linux Based / IoT Ready
- Wireless Communication (WiFi)

Application & Compatibility

- Dual-stage Conventional Systems
- Dual-stage Heat Pump Systems
- Low Voltage Systems (24VAC)



Key Features

- Large 7 inch Diagonal Full Color Display (23.5 sq.in.)
- Capacitive Touchscreen for Intuitive Control
- 7-days Programmable
- Fahrenheit or Celsius Temperature Unit
- Adjustable Temperature Differentials
- Permanent Memory
- Compressor Cycle Protection
- Manual or Automatic Changeover
- Temporary Override
- Integrated Temperature & Humidity Sensor
- Remote Temperature Sensing
- Economizer Function
- Dehumidification Function
- Wireless Communication (WiFi)
- RS-485 Wired Control Interface (Modbus, BACnet MS/TP, Custom Protocol)

- 4.3" Monochrome Resistive Touchscreen
- Wireless Communication (WiFi)
- IoT Ready

Application & Compatibility

- Dual-stage Conventional Systems
- Dual-stage Heat Pump Systems
- Low Voltage Systems (24VAC)
- BMS Supervised Operation



Key Features

- Large 4.3 inch Diagonal Monochrome Display (8.9 sq.in.) with Blue Backlight
- Resistive Touchscreen
- 5-2 days Programmable
- Fahrenheit or Celsius Temperature Unit
- Adjustable Temperature Differentials
- Permanent Memory
- Compressor Cycle Protection
- Manual or Automatic Changeover
- Temporary Override
- Integrated Temperature & Humidity Sensor
- Remote Temperature Sensing
- Economizer Function (Opt.)
- Dehumidification Function (Opt.)
- Analog Output (2x Opt.)

smartio

by M2S

Human-Machine Interface

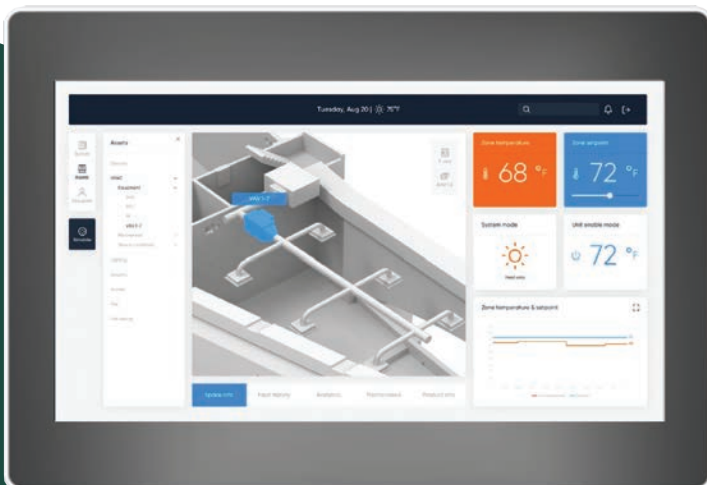
Low Voltage

Solutions tailored
to your needs

- 7" Color Front Glass Capacitive Touchscreen
- Linux Based / IoT Ready
- Wireless Communication (WiFi)

Application & Compatibility

- Dual-stage Conventional Systems
- Dual-stage Heat Pump Systems
- Low Voltage Systems (24VAC)



Key Features

- Large 7 inch Diagonal Full Color Display (23.5 sq.in.)
- Capacitive Touchscreen for Intuitive Control
- Built on Linux Operating System Providing a Powerful Platform
- Allows Endless Possibilities for the End-Customer
- Sleek Design & Functionnalities
- Permanent Memory
- Integrated Temperature & Humidity Sensor
- Economizer Function
- Wireless Communication (WiFi)
- RS-485 Wired Control Interface (Modbus, BACnet MS/TP, Custom Protocol)

- 7" Color Resistive Touchscreen
- BACnet MS/TP or IP over WiFi
- Modbus

Application & Compatibility

- Dual-stage Conventional Systems
- Dual-stage Heat Pump Systems
- Low Voltage Systems (24VAC)
- BMS Supervised Operation



Key Features

- Large 7 inch Diagonal Full Color Display (23.5 sq.in.)
- Resistive Touchscreen
- Allows Endless Possibilities for the End-Customer
- Sleek Design & Functionnalities
- Permanent Memory
- Integrated Temperature & Humidity Sensor
- BACnet MS/TP Wired Interface
- BACnet IP over WiFi
- Economizer Function (Opt.)
- Analog Output (2x Opt.)



espresso

by M2S

Air Controllers

Low Voltage - HRV - ERV



Solutions tailored
to your needs

- Wall-Mount Design
- 4 Soft-Touch Tactile Pushbuttons
- Intuitive LCD Display

Application & Compatibility

- HRV / ERV
- Air Cleaner
- Humidifier & Dehumidifier
- Low Voltage 5-12VDC or 24VAC

Key Features

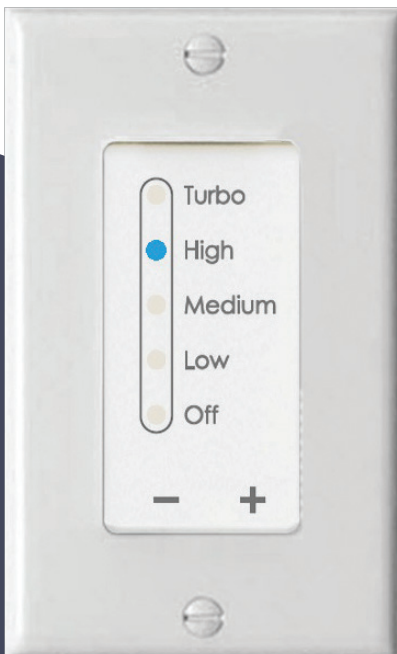
- LCD Display with LED Backlight
- 4 Soft-touch Tactile Pushbuttons
- 3 LED Indicators above Display
- Single Gang Electrical Box Compatible
- Two-part Enclosure for Easy Installation
- Custom Enclosure Printing, Color, Logo
- Control Logic & Algorithm
- RS-485 Communication Capable (Opt.)



- In-Wall Decora® Style
- Up to 5 LED Indicators
- Single or Dual Pushbuttons

Application & Compatibility

- HRV / ERV
- Air Cleaner
- Air Handler
- Low Voltage 5-12VDC or 24VAC



Key Features

- Up to 5 LED Indicators, Multiple Colors Available
- Replaces Traditional Mechanical Switches
- Single or Dual Pushbuttons
- In-Wall Decora® Style Controller
- Single Gang Electrical Box Compatible
- Custom Enclosure Printing, Color, Logo
- Control Logic & Algorithm
- RS-485 Communication Capable (Opt.)



- In-Wall Decora® Style
- 3 Tactile Pushbuttons
- Intuitive LCD Display

Application & Compatibility

- HRV / ERV
- Air Cleaner
- Humidifier & Dehumidifier
- Low Voltage 5-12VDC or 24VAC

Key Features

- LCD Display with LED Backlight
- 3 Tactile Pushbuttons
- In-Wall Decora® Style Controller
- Single Gang Electrical Box Compatible
- Custom Enclosure Printing, Color, Logo
- Control Logic & Algorithm
- RS-485 Communication Capable (Opt.)



- Versatile HVAC Power Controller
- Variable Speed, Multiple Motor Speeds

Application & Compatibility

- HRV / ERV
- Air Cleaner
- Humidifier & Dehumidifier
- Custom Power Application
- 120VAC / 240VAC Operation



- Motor Failure Detection
- Motors, Sensors & Peripheral Functional Building Blocks

Key Features

- 24VAC Compatible Inputs
- Door & Limit Switch Inputs
- Up to 16 Outputs
- Damper Control
- Controls up to 3 Motors
- Fixed Speed, Multi-speed, Variable Speed
- Temperature Sensor
- Air Pressure Sensor
- Line Voltage & Current
- Custom Connector Types
- Custom User Interface
- Custom Control Logic & Algorithm



| MODEL | | STAGING | | | PROGRAM | | APPLICATION | | | | | | |
|-----------|----------------|--------------|-----------|----------|------------------|-------|------------------|-----------|----------|---------------------|-------------------|----------------------------|-----------|
| FAMILY | CATALOG NUMBER | CONVENTIONAL | HEAT PUMP | FAN COIL | WEEKDAYS WEEKEND | 7 DAY | ELECTRIC HEATING | HEAT PUMP | FAN COIL | LOW-VOLTAGE 5-12VDC | LOW-VOLTAGE 24VAC | LINE-VOLTAGE 120VAC 240VAC | HRV - ERV |
| comforto | TX120 | 2H 2C | 2H 2C | | • | C | • | • | | • | C | | |
| | TX070 | 2H 2C | 2H 2C | | • | C | • | • | | • | C | | |
| | TX080 | | 2H 2C | 2P 4P | • | C | | | • | • | C | | |
| prestigio | TX110 | • | • | | O | O | C | C | C | • | C | | |
| | TX075 | 2H 2C | 2H 2C | | • | C | • | • | | • | C | | |
| espresso | TX050 | | | | | | | | | O | | | • |
| | TX020 | | | | | | | | | O | | | • |
| | TX030 | | | | | | | | | O | O | | • |
| | TX060 | | | | | | | | | | | • | |
| smartio | TX115 | | | | | | | | | • | C | | |
| | TX125 | | | | | | | | | • | C | | |

| MODEL | | FUNCTIONS AND FEATURES | | | | | | | | | | | | | | | | | | | | | | | CONNECTIVITY | | | | | | | | | | | | |
|-----------|----------------|------------------------|--------------------|--------------------|--------------------------|----------------|-------------------------|----------------------------|--------------------|------------------------|-----------------------|---------------------|---------------------|-----------------------------------|------------------------|------------------|-----------------|-------------------|-----------------|------------------------|--------------------|-------------------------------|----------------------------|----------------------------|-------------------------------|------------------|------------|----------------|------------------|-----------------------|------------------|--------------------|--------|------------------------|-----------------------|---|---|
| FAMILY | CATALOG NUMBER | TOUCHSCREEN DISPLAY | FULL COLOR DISPLAY | MONOCHROME DISPLAY | DISPLAY SIZE (DIAG. IN.) | LED INDICATORS | FAHRENHEIT CELCIUS UNIT | ADJUSTABLE DIFFERENTIAL(S) | TEMPORARY OVERRIDE | 0-10 VDC ANALOG OUTPUT | 0-5 VDC ANALOG OUTPUT | DRY CONTACT OUTPUTS | WET CONTACT OUTPUTS | COMPRESSOR SHORT CYCLE PROTECTION | DATE & CALENDAR MEMORY | PERMANENT MEMORY | CIRCULATING FAN | MANUAL CHANGEOVER | AUTO CHANGEOVER | USER INTERFACE LOCKOUT | TEMPERATURE LIMITS | INTEGRATED TEMPERATURE SENSOR | INTEGRATED HUMIDITY SENSOR | REMOTE TEMPERATURE SENSING | PIPE TEMPERATURE SENSOR INPUT | AUXILIARY OUTPUT | ECONOMIZER | TIMER FUNCTION | DEHUMIDIFICATION | WIFI (SMARTPHONE APP) | MODBUS RTU (BMS) | BACNET MS/TP (BMS) | RS-485 | CUSTOM POWER INTERFACE | DEMAND RESPONSE READY | | |
| comforto | TX120 | • | • | | 7 | | • | • | • | 2x0 | 2x0 | | 12x0 | • | C | • | • | • | • | • | • | • | • | 3x | | • | O | | C | C | C | • | • | | C | | |
| | TX070 | • | | • | 4.3 | | • | • | • | 2x0 | 2x0 | | 12x0 | • | C | • | • | • | • | • | • | • | • | 3x | | • | O | | C | C | • | • | • | | | C | |
| | TX080 | • | | • | 4.3 | | • | • | • | 2x0 | 2x0 | | 12x0 | | C | • | • | • | • | • | • | • | • | 3x | • | W:2P C:4P | | | C | C | C | C | • | | | C | |
| prestigio | TX110 | • | • | | 7 | | • | C | C | 2x0 | 2x0 | | 8x0 | C | C | • | • | C | C | C | C | • | • | 2x0 | | | C | | | C | C | C | C | | | C | |
| | TX075 | • | | • | 4.3 | | • | • | • | 2x0 | 2x0 | | 12x0 | • | C | • | • | • | • | • | • | • | • | 3x | | • | O | | C | C | • | • | • | | | C | |
| espresso | TX050 | | | • | 1.4 | C | • | | | | 2x0 | 1x0 | | | | • | • | | | | | • | • | | | 1x | | O | • | | | | | O | | | |
| | TX020 | | | | | • | • | | | | 2x0 | 1x0 | | | | • | • | | | | | | | | | 1x | | • | | | | | | | O | | |
| | TX030 | | | • | 1.4 | | • | | | | 2x0 | 1x0 | | | | • | • | | | | | • | • | | | 1x | | O | • | | | | | | O | | |
| | TX060 | | | | | | | | | | | | | | | | | | | | | | | | | | | | | | | | | • | C | | |
| smartio | TX115 | • | • | | 7 | | | | | 2x0 | 2x0 | | 8x0 | | C | • | | | | | | • | • | 2x0 | | | | | | | C | C | C | C | | | C |
| | TX125 | • | • | | 7 | | | | | 2x0 | 2x0 | | 12x0 | | C | • | | | | | | • | • | 3x | | | | | | | C | C | • | • | | | C |

| MODEL | | COMPETITIVE CROSS REFERENCE | | | | | | | | | | | |
|-----------|----------------|-----------------------------|----------------------------------|------------------|-----------------|--|-----------|----------------|-------|----------------|----------|-------------|----------------------|
| FAMILY | CATALOG NUMBER | BRAEBURN | HONEYWELL | JOHNSON CONTROLS | AUTOMATED LOGIC | EMERSON | SIEMENS | CARRIER | PRO1 | DELTA CONTROLS | VICONICS | NEPTRONIC | LIFEBREATH |
| comforto | TX120 | 6400 | THX9421R5021WW | T8690 | | 1F95-1291 | | | | | | | |
| | TX070 | 5320 | TB7220, TH7220 TB8220, TH8320 | T8490 | ZS Pro | 1F95-0680, 1F95-0671 1F95-1277, 1F95-1280 | RDY2000BN | TSTPHA01 | T955S | eZNTW | VT8600 | TUHB24C6X2 | |
| | TX080 | | TB8575A1000 | T701DFP-4, T8800 | | | RDG165KN | 33CSSN2-FC | | DNT-T221 | VT8300 | TFC24F3XYZ1 | |
| prestigio | TX110 | | | Glas | | Sensi Touch WiFi | | SYSTXCCITC01-B | | | | | |
| | TX075 | 5320 | TB7220, TH7220 TB8220, TH8320 | T8490 | ZS Pro | 1F95-0680, 1F95-0671 1F95-1277, 1F95-1280 | RDY2000BN | TSTPHA01 | T955S | eZNTW | VT8600 | TUHB24C6X2 | |
| espresso | TX050 | 229150 | H6062 | | | | | | | | VH7200 | HRO20 | Digital Wall Control |
| | TX020 | | | | | | | | | | | | 99-DET01 |
| | TX030 | 229100 | | | | | | | | | | | BC02 |
| | TX060 | | | | | | | | | | | | |
| smartio | TX115 | | | Glas | | Sensi Touch WiFi | | SYSTXCCITC01-B | | | | | |
| | TX125 | 6400 | THX9421R5021WW | T8690 | | 1F95-1291 | | | | | | | |



M2S
ELECTRONICS

Member of



Narvi
Consortium

Toll Free: 1 877 253-6246
Email: info@m2s.ca
www.m2selectronics.com
www.narviconsortium.com